



# MATERIALS & RESEARCH DIVISION

Reviewed by:

  
Robert F. Cauley, P.E.  
Materials and Research  
Engineer



Prepared by:

  
Amy L. Gamble  
May 24, 1991  
Page 1 of 2

---

## RESEARCH UPDATE

Number U91-11

---

### BELPRO REMOVABLE TRAFFIC PAINT SYSTEM (Initial Report)

REFERENCE: Work Plan 91-R-5

HISTORY:

BELPRO (formerly TEMPRO) removable traffic paint was selected as an alternative to temporary traffic marking tape used on the Montpelier IR 089-2(18) project.

On April 29, 1991, the product was spray applied along the right lane line and at the exit gore on I-89 Southbound at Exit 8 (Montpelier). The painting operation was completed in the late afternoon under ideal conditions.

On April 30, 1991, after 15 hours of curing, the paint was washed away by heavy rains. The following day, temporary preformed tape lines were applied. By May 2, 1991, only a faint shadow of the paint was visible.

BACKGROUND NOTE:

The BELPRO system was field tested on a section of the Barre-Montpelier road during the summer of 1989, prior to being accepted for the I-89 project. It performed satisfactorily at that time. However, the product was changed after the original field test. The vehicle system was changed from a solvent borne system to a water borne system. The pigment and resin were unchanged. This change was made to eliminate an environmental hazard, and improved durability according to the manufacturer.

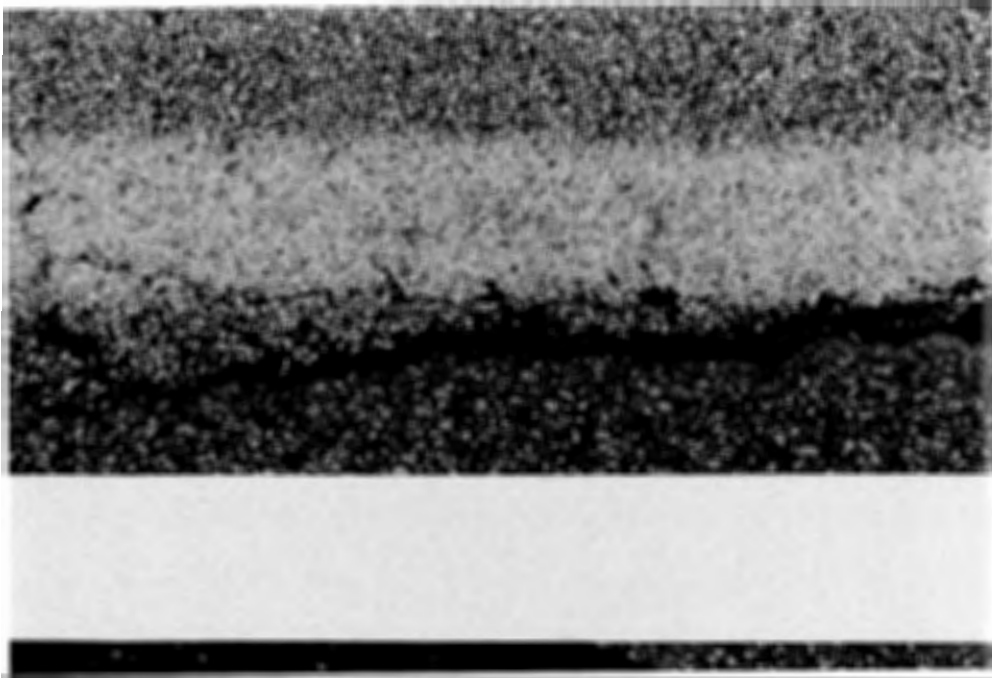
STATUS:

The distributor has attributed the failure of the BELPRO paint to a bad batch, which was also responsible for failures in Maine the same day. The manufacturer will discontinue the water-borne system and return to the solvent borne system.

FOLLOW UP:

The removable paint was selected for safety reasons; its maintenance and removal require fewer crew hours in a restricted traffic zone. This is still valid despite the failure of this

trial. It is recommended that a new site be selected for further testing of the BELPRO Removable Traffic Paint system.



BELPRO Removable Traffic Paint failure  
(Temporary Tape next to Paint)

Distribution A,B,C,D,E,F,G